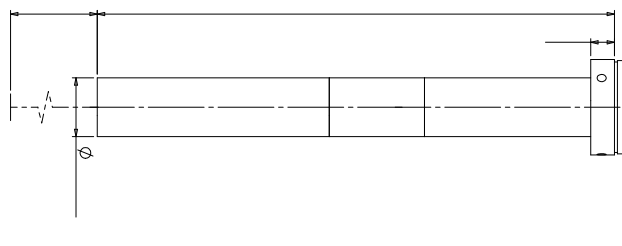


WWL20-250A



WWL

•	/	(x)	2.0
•	Ø16mm	WD(mm)	250
•		CCD (mm)	6.0(1/3")
•		F/#	40
•		NA	0.025
		(um)	13.4
		(mm)	0.8

(mm x mm)

	C	1/4" (3.2x2.4)	1.6x1.2
(mm)	141.2	1/3" (4.8x3.6)	2.4x1.8

