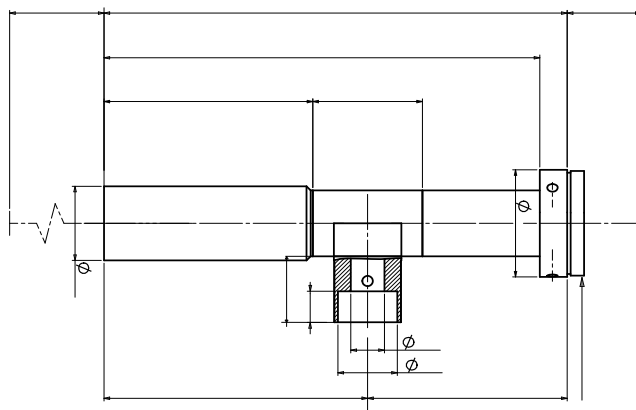


WWL10-110CT



L

16	/	()	1.0
		D()	113
		CCD ()	6.0(1/3")
		F/#	13.7
		A	0.03663
		()	9.2
		()	1.1

()

()	C	1/4"(3.2 2.4)	3.2 2.4
	109.8	1/3"(4.8 3.6)	4.8 3.6

