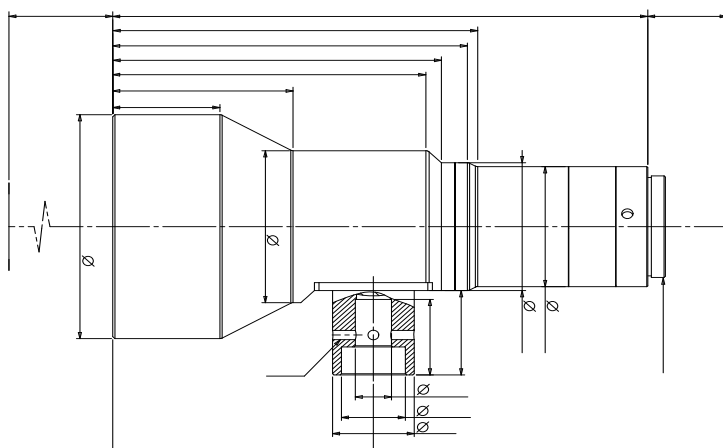


# WWK03-110C-230



## WWK

•	5M~20M		(x)	0.3
•			WD(mm)	110±2
•		AOI	CCD (mm)	11(2/3")
•			F/#	5.6
•			MTF30 (lp/mm)	>170
•			DoF(mm)	±2.5@ F5.6
•			(% max)	<0.02
•			(° max)	<0.04

(mm x mm)

	C	1/1.8" EV76C570 (7.2x5.4)	24.0x18.0
(mm)	118.0	1/1.7" IMX226 (7.5x5.6)	25.0x18.7
		2/3" IMX250/264 (8.45x7.1)	28.2x23.7

